

# ***Make Brass Industries***

Manufacturer of Brass Turned Components  
As per Custom Specification (Drawing and Samples).

[www.makebrassind.com](http://www.makebrassind.com)

# ***Make Brass Industries***

Manufacturer of Brass Turned Components

---

## **Company Profile**

**Make Brass (The Group of Industries)** is a Family own Business and are mainly engaged in manufacturing any kind of Brass Machine Parts and Casting which is used as Assembly Component for Different Applications like Marine, Aerospace, Plumbing Fitting, Electrical, Electronics, Automobile, Pneumatic Fittings, Telecommunication, Hydraulic Fitting and Agriculture Equipment Parts.

**Since 1995** we are in a constant process of developing new designs and ideas. We have converted our unit as an Excisable unit in 2008. Currently we have average turnover of Rs. 5,00,00,000-00 and more. We have specialty in Brass Casting and for that we are the pioneer, we can challenge for any difficult Brass casting Item at BALAJI CAST one of our sister concern firm. For that we are using the COPPER & ZINC as per casting required.

**The Company** has specialized in manufacturing of any type of Brass Product as per Customer requirement. We can develop the product as per Drawing or Sample provided by the customer. The Company has been manufacturing for the National as well as International market since 5 years and satisfied customers in more than Six Nations.

**We are in Metal** Manufacturing industries since last 15 years and we have team of technical and production process experts who have more than 25 years industrial component manufacturing experience.

# ***Make Brass Industries***

Manufacturer of Brass Turned Components

---

## **Company Profile**

**We have In-house** Casting Foundries for Manufacturing Brass Rods and one piece Brass Components. Our flexible assembly, packaging and shipping systems allow us to meet virtually any requirement, including parts combined in a 'KIT' for specific applications, custom labeling and packing.

**We pursue innovation** and consistent quality control system. At Make Brass Industries we have a totally dedicated work force whose selfless and hard working lead to grab a place in the highly competitive international market.

**Total customer satisfaction** both in quality and personalized attention, understanding and developing innovative cost effective techniques for customer benefits is the base of our foundation since years.

***Proprietor***  
Balaji Cast  
C. A. Patel

***Make Brass Industries***  
Manshukh A. Patel  
Excisable

***Siddharth Brass Industries***  
J.A.Patel

# *Make Brass Industries*

## **Establishment – 1995**

*Manufacturer of Brass  
Turned Components*

## **Turn over**

*Turn over – Yearly 5 cores(approx) - 2009/10  
Turn over – Yearly 3 cores(approx) - 2008/09  
Turn over – Yearly 2 cores(approx) - 2007/08*

## **Specification Confirmation to International Standards**

- ❖ DIN
- ❖ ISO
- ❖ IS
- ❖ ANSI
- ❖ JIS
- ❖ ASTM
- ❖ BS

## **Yearly production capability** *250 to 300 tones*

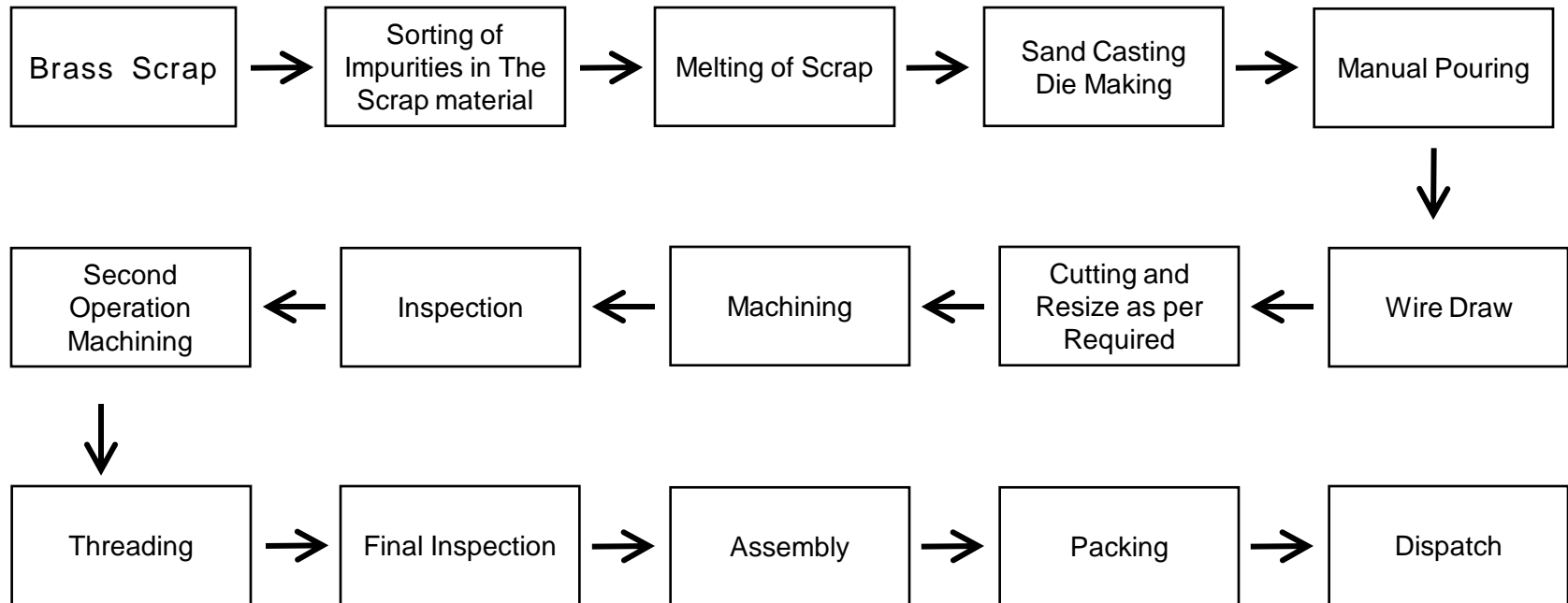
Special Purpose Machine(Mini Trob)	10 nos.
Manual Machine (12mm to 35mm)	15 nos.
Threading Machine	04 nos.
Milling Machine	05 nos.
Drilling Machine	15 nos.
Cutting Machine	03 nos.
Drawer Machine(For Brass Rods)	03 nos.

**In-house Casting (Brass Foundry) with per day capacity of 2 tones**

# *Make Brass Industries*

## LINE DIAGRAM FOR PROCESS OF MANUFACTURING

### GENERAL MANUFACTURING PROCESS IN BRIEF:-



Note : Above Manufacturing Process may differ for certain parts/products.

# ***Make Brass Industries***

Manufacturer of Brass Turned Components

---

## **Our Products**

- Brass Inserts PPR Fittings
- Brass Inserts CPVC Fittings
- Brass Lock Parts
- Earthing and Forging Parts
- Brass Sanitary Parts
- Brass Auto Parts
- Brass Building Hardware
- Brass Electrical Parts

**We can manufacturer any type of brass components as per custom specification (drawing and samples).**

# ***Make Brass Industries***

Manufacturer of Brass Turned Components

Sanitary Parts



# ***Make Brass Industries***

Manufacturer of Brass Turned Components

Male Female Moulding Inserts



# ***Make Brass Industries***

Manufacturer of Brass Turned Components

Lock Parts



# ***Make Brass Industries***

Manufacturer of Brass Turned Components

Electrical Parts



# ***Make Brass Industries***

Manufacturer of Brass Turned Components

**Builders Hardware**



# ***Make Brass Industries***

Manufacturer of Brass Turned Components

---

## ***India Office***

---

**Address** : Plot No.699-700, G.I.D.C. PHASE-II,  
Dared, Jamnagar - 361

**Phone No.** : +91 - 288 – 2730464

**Contact Person** : Mr. Manshukh Patel

**Mobile No.** : +91 – 9898694343

**E-mail** : [info@makebrassind.com](mailto:info@makebrassind.com)

**Website** : [www.makebrassind.com](http://www.makebrassind.com)

# *Make Brass Industries*

---

**Thank You**